

SAW Resonator 418.0MHz
Part No: MA05649

Model: TC0117A
Rev No: 2

A. FEATURES:

One-Port Resonator.

B. MAXIMUM RATING:

1. Input Power Level: 0dBm
2. DC voltage: 12V
3. Operating Temperature: -40°C to +85°C
4. Storage Temperature: -40°C to +85°C
5. Moisture Sensitivity Level: Level 1 (MSL1)

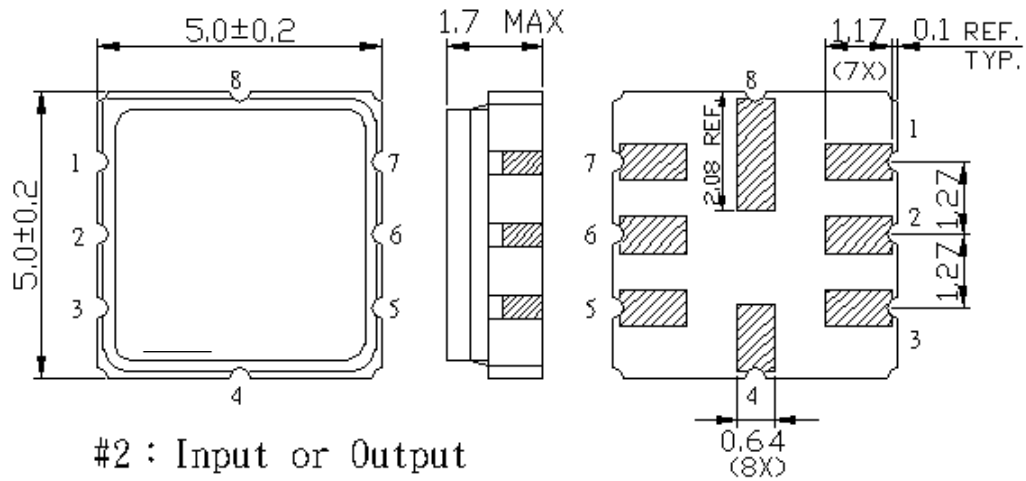
C. ELECTRICAL CHARACTERISTICS:

Characteristics	Unit	Min	Typ	Max
Center frequency Fr	MHz	417.925	418	418.075
Insertion Loss IL	dB		0.9	2.0
Equivalent Elements				
Motional capacitance C1	fF	-	2.19	-
Motional inductance L1	μH	-	66.11	-
Motional resistance R1	Ohm	-	12.68	-
Parallel capacitance Co	pF	-	3.65	-
Temp. coeff.	ppm/c*2	-	0.032	-
Turnover To	°C	20	-	50
Package size	SMD 5X5X1.4mm			

SAW Resonator 418.0MHz
Part No: MA05649

Model: TC0117A
Rev No: 2

D. OUTLINE DRAWING:

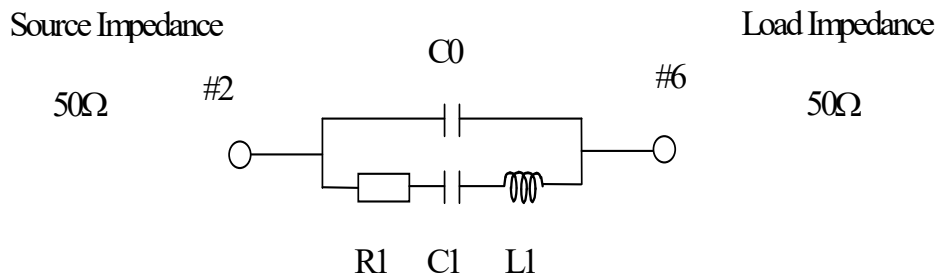


- #2 : Input or Output
- #6 : Output or Input
- #4、8 : Case Ground
- #1、3、5、7 : Ground

Unit : mm

E. EQUIVALENT CIRCUIT:

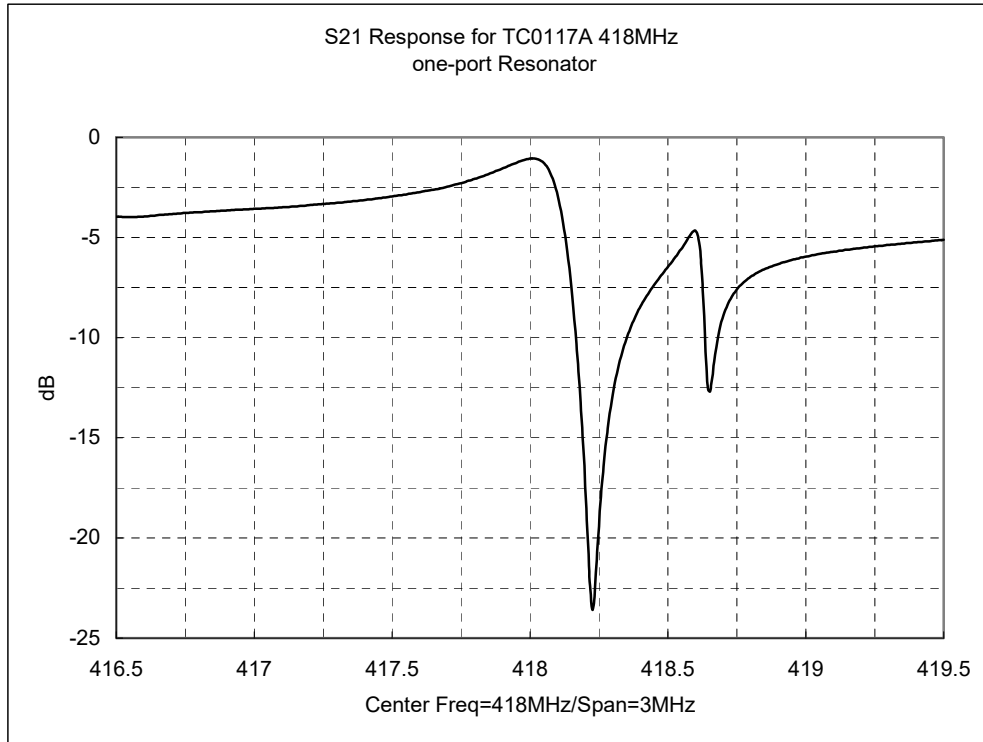
One-Port Resonator:



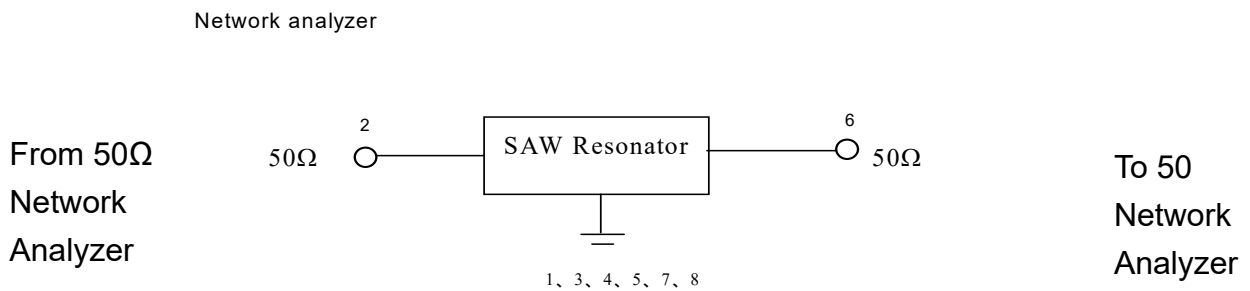
SAW Resonator 418.0MHz
Part No: MA05649

Model: TC0117A
Rev No: 2

F. FREQUENCY CHARACTERISTICS:

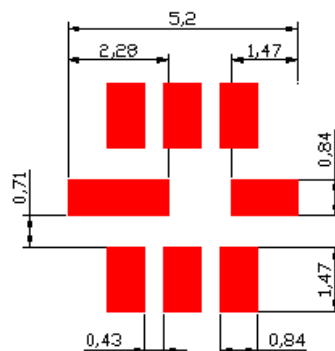


G. TEST CIRCUIT:



H.

H. PCB FOOTPRINT:

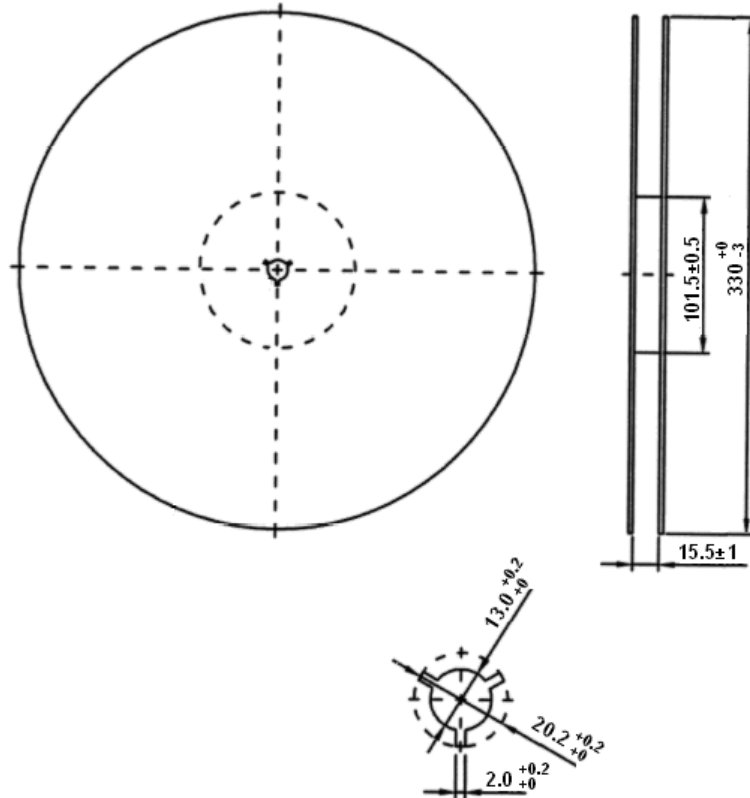


SAW Resonator 418.0MHz
Part No: MA05649

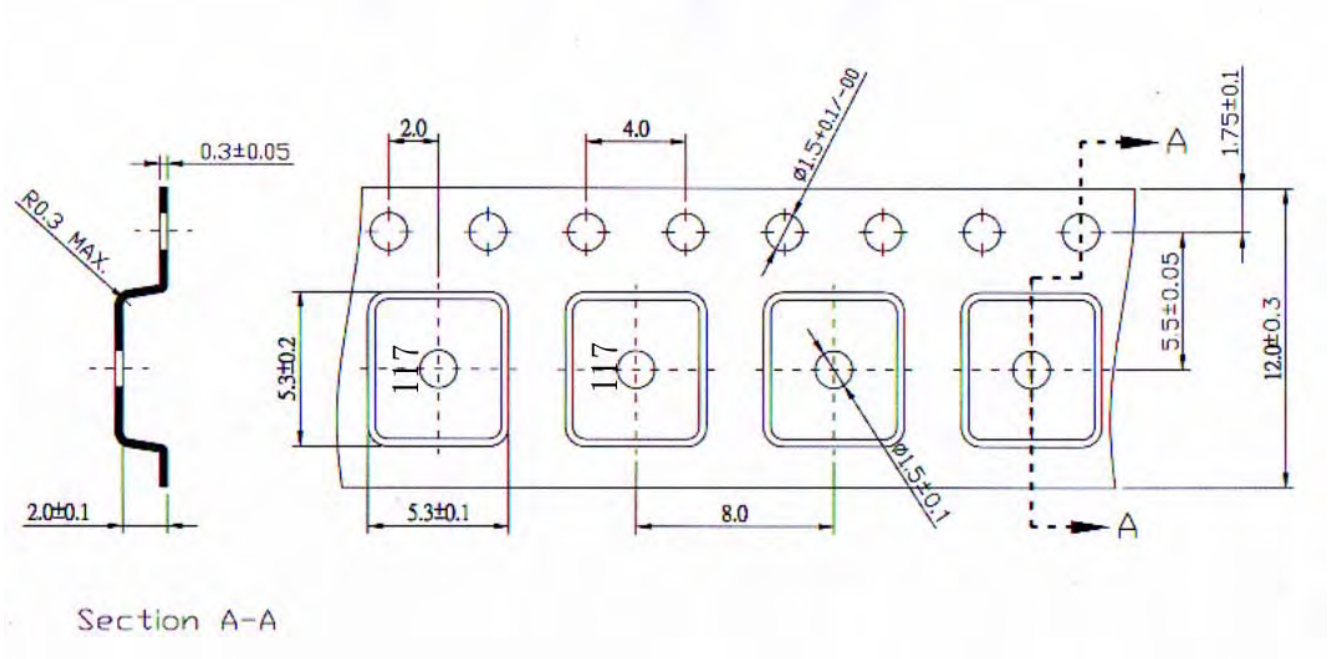
Model: TC0117A
Rev No: 2

I. PACKING:

1. Reel Dimensions



2. Tape Dimensions



SAW Resonator 418.0MHz
Part No: MA05649

Model: TC0117A
Rev No: 2

J. RECOMMENDED REFLOW PROFILE:

1. Preheating shall be fixed at 150~180°C for 60~90 seconds.
2. Ascending time to preheating temperature 150°C shall be 30 seconds min.
3. Heating shall be fixed at 220°C for 50~80 seconds and at 260°C+0/-5°C peak (20~40 sec).
4. Time: 2 times.

